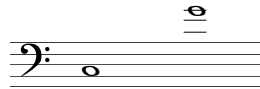


*to Bill King*

Rudolf Haken  
Concerto for Clarinet,  
Orchestra, and Steel Pans

cello steelpan & triangle



© 2004 Rudolf Haken  
University of Illinois School of Music  
1114 W. Nevada St.  
Urbana, IL 61801 USA  
Email [rlhaken@yahoo.com](mailto:rlhaken@yahoo.com)  
Website [www.rudolfhaken.com](http://www.rudolfhaken.com)  
Tel. 217-244-2667  
Notated using LIME music notation software  
available at [www.cerlsoundgroup.org](http://www.cerlsoundgroup.org)

27 September 2004

- I. Allegro moderato            measure 1        duration 9 min. 16 sec.  
II. Andante                    measure 249     duration 6 min. 9 sec.  
III. Presto                     measure 348     duration 8 min. 54 sec.

INSTRUMENTATION (35-piece orchestra including steel pans)

**WOODWINDS**

piccolo  
oboe  
clarinet in b-flat  
bass clarinet in b-flat  
soprano saxophone in b-flat  
contrabassoon

**BRASS**

horn in f  
trumpet in c  
trombone  
tuba

**PERCUSSION**

\*5-octave marimba  
4 tom-toms / vibraphone / suspended cymbal  
steel band (6 musicians):  
    lead steel pan 1  
    lead steel pan 2 / snare drum  
    double second steel pan 1  
    double second steel pan 2  
    cello steel pan / triangle  
    bass steel pan / tam-tam

**STRINGS**

violin 1 (four players)  
violin 2 (four players)  
viola (four players)  
cello (four players)  
\*6-string electric bass (one player)

---

\*Alternative parts are available to substitute for unusual instruments:  
5-octave marimba may be replaced by 4-octave marimba  
6-string electric bass may be replaced by keyboard

# RUDOLF HAKEN CONCERTO FOR CLARINET, ORCHESTRA, AND STEEL PANS

## dedicated to Bill King

For several years this work remained a "concerto in search of a solo instrument." Originally the slow movement was written for the viola. The concerto was later performed as a trumpet concerto by Paul Merkelo, principal trumpet of the Montreal Symphony, then was recast as a concerto for soprano saxophone. I finally decided the clarinet was the ideal instrument for this concerto. It is in this form (with major changes to the orchestration) that the work is being performed this evening.

Interestingly, this is not the first concerto to be recast for different solo instruments: Bach rewrote violin concertos for the harpsichord, Mozart transcribed his oboe concerto for the flute, and Beethoven published a piano version of his violin concerto. Another interesting aspect of composition is finding the ideal location to compose. There are times when a noisy, disruptive environment is particularly inspiring. Mozart wrote his famous trio for clarinet, viola, and piano in a bowling alley. Similarly, I wrote much of this concerto during a lengthy Greyhound bus journey, actually choosing to travel by bus in order to give me time and repose for writing.

I have had a long-standing interest in incorporating steel pans into orchestral music. This union of vastly different timbres and musical styles has provided wonderful compositional opportunities.

The first movement of this concerto is a tribute to Johann Sebastian Bach. Although the music sounds nothing like Bach, it is based on four notes which spell his name. (In German notation, B-A-C-H is equivalent to B flat -A-C-B). This motif is first stated by the clarinet alone, followed by the lead steel pan. The electric bass then creates a twelve-tone ostinato by presenting "BACH" in three different tonalities. This serves as the basis for a calypso rhapsody played by the steel band. The clarinet and orchestra join in numerous variations on "BACH," which take on the character of group jazz improvisation, replete with quotations from major works. After a clarinet cadenza, the opening calypso theme returns, played by the full orchestra. A solo tuba ritornello leads into the lyrical second movement.


The slow movement is based on an "ACH" motif, that is to say, "B-A-C-H" minus the first note. Vibraphone and marimba accompany the solo clarinet in an expressive, melancholy tune, which is answered in solos by several members of the orchestra.

The finale then opens with a "CH" motif, which is of course the second half of the "BACH" motif. From this develops a raucous tune in triple meter, which alternates throughout the movement with an expansive, lyrical melody. The concerto culminates in a bombastic climax, featuring an epic battle between these two themes.

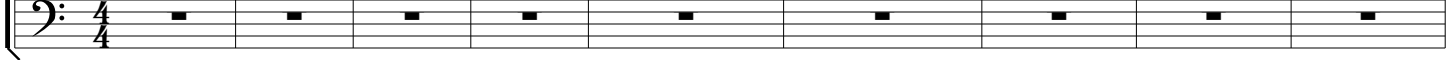
# Rudolf Haken Concerto for Clarinet, Orchestra, and Steel Pans

## I. Allegro Moderato (♩=112)

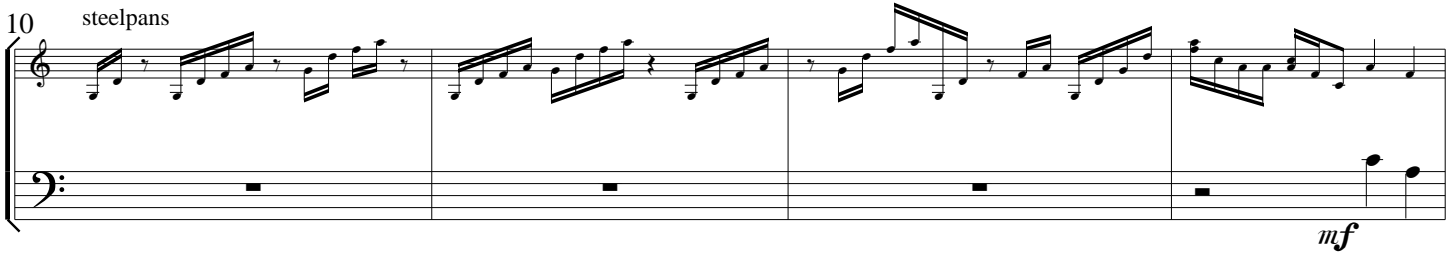
solo clarinet
steelpan
electric bass

cues 

All cues are in concert pitch.


pans 

10 steelpan

pans 

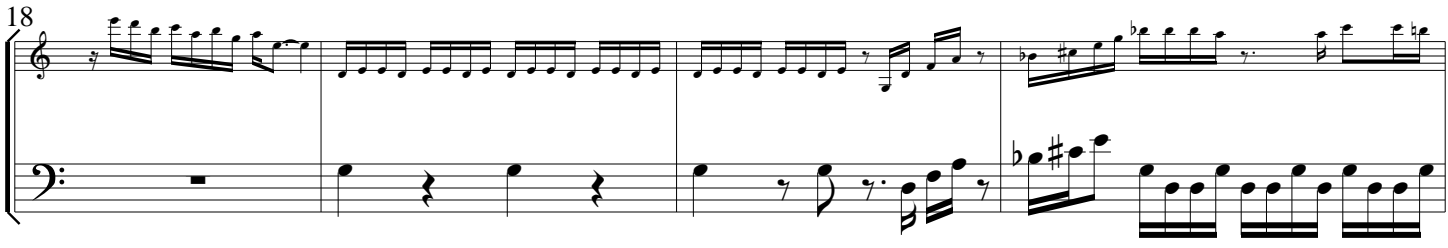
*mf*

14

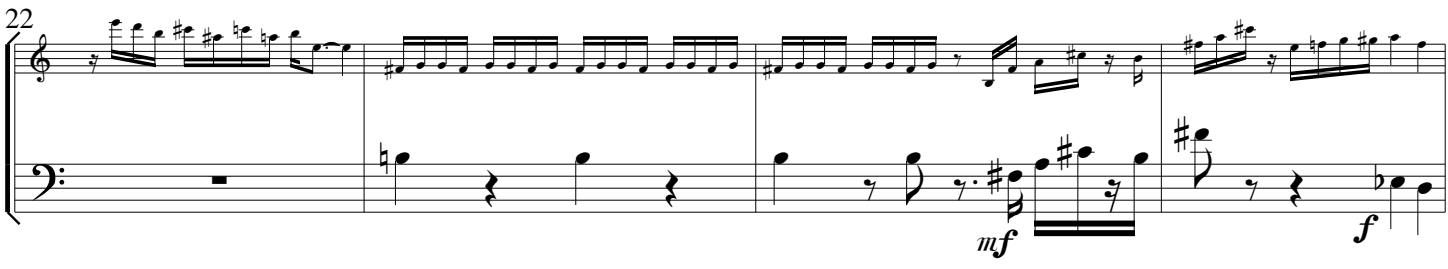
pans 

*f*

18

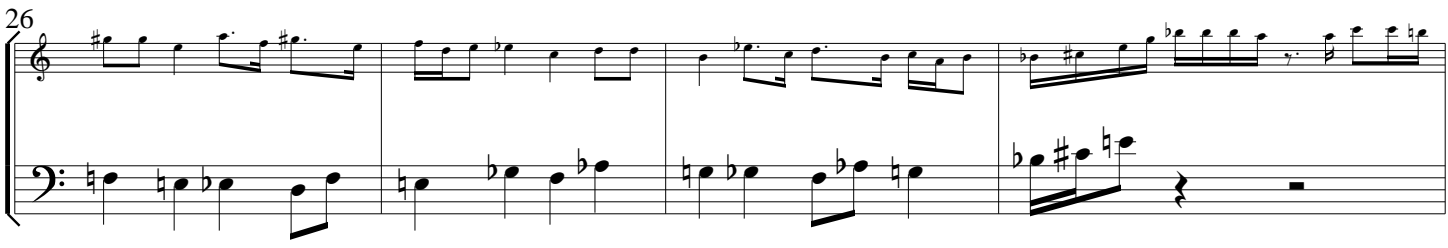
pans 

22

pans 

*mf* *f*

26

pans 

30  
 pans

34  
 pans

38  
 pans

41  
 pans

46  
 pans

50  
 pans

54  
 pans  
 solo clarinet

59  
 pans  
 \* gong  
 solo clarinet

The musical score for pans is presented in eight systems, each with a treble and bass clef staff. The systems are numbered 30, 34, 38, 41, 46, 50, 54, and 59. The notation includes various rhythmic values, accidentals, and dynamics. Key features include:
 

- Measures 30-33: Treble staff has a complex rhythmic pattern; bass staff has rests followed by a *ff* dynamic.
- Measures 34-37: Treble staff continues the rhythmic pattern; bass staff has notes with accents (>>) and rests.
- Measures 38-40: Treble staff has a steady eighth-note pattern; bass staff has rests followed by a *ff* dynamic.
- Measures 41-45: Treble staff has a melodic line; bass staff has a rhythmic accompaniment.
- Measures 46-49: Treble staff has a rhythmic pattern; bass staff has notes with a *ff* dynamic.
- Measures 50-53: Treble staff has a rhythmic pattern; bass staff has notes with accents (^ ^) and a *ff* dynamic.
- Measures 54-58: Treble staff has a melodic line; bass staff has rests and notes. A 'solo clarinet' instruction is present.
- Measures 59-62: Treble staff has notes with triplets and a *gong* instruction; bass staff has notes with triplets and a 'solo clarinet' instruction.

63

pans

68

pans

orch.

*f*

76

pans

solo clar. orch. clar. orch.

83

pans

clar. orch. clar. orch. clar.

86

pans

sax, marimba clar.

*p*

91

pans

94

pans

strings

98

pans

gong solo clarinet

oboe, sax

tpt, hn

103

pans

107

pans

electric bass

110

pans

orch. clar. & violas

sax & violins

solo clarinet

115  
 pans

118  
 pans *p*

121  
 pans piccolo solo clarinet piccolo

125  
 pans solo clarinet *tr*

129  
 pans

134  
 pans orch.

138  
 pans *fff*

141  
 pans *fff* clarinet cadenza

146

pans

153

pans

158

pans

162

pans

166

pans

169

pans

175  
electric bass  
**Tempo Primo** (♩=112)  
solo clar.  
pans

179  
pans

183  
pans

186  
pans

190  
pans

mba  
solo clarinet

195  
pans

198

pans

*f* *ff*

203

pans

*tr* *tr* *tr* *tr* *tr* *tr*

*ff* *ff* *f*

orch.

209

pans

213

pans

*ff* *fff*

217

pans

*fff*

221

pans

*allargando*

tuba cadenza

226

pans

237

pans

241

pans

246

pans

vib/mrba solo clarinet  
II. Andante (♩=52)

253

pans

260

pans

steelpan

*p*

266

pans

270

pans

*poco rit.*  
Moderato (♩=72)

*f*

274 *p* trumpet

279 *rit.* solo clarinet oboe

284 *poco rit.* vib/mba solo clar. **Andante** (♩=52)

289

293 woodwinds solo clarinet *poco rit.* **Allegretto** (♩=126)

300 *poco rit.* *a tempo*

308 piccolo sax

315

pans

*poco rit.*

vib/mba solo clarinet

**Andantino** (♩=58)

321

pans

*poco rit.*

326

pans

piccolo

**Moderato** (♩=72)

330

pans

solo clarinet

**Andante** (♩=52)

**Moderato** (♩=60)

sax

335

pans

piccolo

bass clarinet

trumpet

solo clarinet

341

pans

*allarg. f*

el. bass

348  
 solo clarinet  
**III. Solo - lento**  
**Presto** (♩=156)  
 pans

353  
 orch.  
 pans  
**f** > > > > > > > > > > > > > > > > > > >

360  
 solo clarinet  
**change to triangle**  
**f**

366  
 orch.  
**TRIANGLE**  
**p**

372  
**change to pans**  
 solo clarinet  
**PANS**  
**f**

378  
**change to triangle**  
 pans

383  
 woodwinds  
 pic. & vln. I  
**TRIANGLE**  
**p**  
 woodwinds

389

pic. & vln. 1

tr. tr.

solo clarinet

trgl.

*p*

396

tr. tr.

tr. tr.

tr. tr.

tr. tr.

tr. tr.

trgl.

402

tr. tr.

tr.

tr.

bass clar., tuba

trgl.

411

tr.

tr.

solo clarinet

snare drum

rall.

trgl.

418

solo clarinet

Andante (♩=52)

trgl.

425

trgl.

433

horn

viola

trgl.

442 *morendo*  
ctbsn

trgl.

449 *allarg.*  
solo clarinet  
**Presto** (♩=156)  
orch.

trgl.

456

trgl.

462  
solo clarinet  
TRIANGLE  
*pp*

trgl.

469  
strings  
WW  
(TRIANGLE)  
*p*

trgl.

475  
WW  
strings  
change to pans  
*p*  
solo clarinet

trgl.

482  
piccolo  
*tr*

pans

488

pans

493

piccolo  
solo clarinet  
allarg.  
oboe  
**Andante** (♩=56)  
PANS  
*p*

499

trumpet  
change to triangle

507

solo clarinet  
**Presto** (♩=156)

514

trgl.

519

GP orch.  
trgl.

526

solo clarinet  
TRIANGLE  
*f*  
change to pans

532

orch. solo clarinet

pans

539

brass solo clarinet

pans

546

orch. clarinet solo clarinet violas & cellos

pans

552

trmbn, bass clar. oboe solo clarinet strings

pans

561

solo clarinet rit. Half tempo (♩=78)

pans

567

woodwinds

pans

574

brass solo clarinet poco a poco stringendo (increase tempo gradually to Presto)

pans

580

pans

586

violins

PANS

**Presto** (♩=156)

**ff**

594

pans

599

orch.

clar.

pans

604

orch.

**Largo molto sostenuto** (♩=48)

**ff grandioso**

pans

609

pans

614

pans

619

pans

*molto allargando*

solo clarinet

**Presto giocoso** (♩=156)

626

pans

orch.

633

pans

solo clarinet

orch.

640

pans

*f*

*ff*

solo clarinet

650

pans

G.P. solo clarinet

*ff*