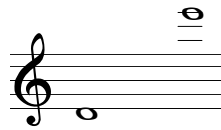


to Bill King

Rudolf Haken
Concerto for Clarinet,
Orchestra, and Steel Pans

lead steelpan 2 & snare drum



© 2004 Rudolf Haken
University of Illinois School of Music
1114 W. Nevada St.
Urbana, IL 61801 USA
Email rlhaken@yahoo.com
Website www.rudolfhaken.com
Tel. 217-244-2667
Notated using LIME music notation software
available at www.cerlsoundgroup.org

27 September 2004

I. Allegro moderato	measure 1	duration 9 min. 16 sec.
II. Andante	measure 249	duration 6 min. 9 sec.
III. Presto	measure 348	duration 8 min. 54 sec.

INSTRUMENTATION (35-piece orchestra including steel pans)

WOODWINDS

piccolo
 oboe
 clarinet in b-flat
 bass clarinet in b-flat
 soprano saxophone in b-flat
 contrabassoon

BRASS

horn in f
 trumpet in c
 trombone
 tuba

PERCUSSION

*5-octave marimba
 4 tom-toms / vibraphone / suspended cymbal
 steel band (6 musicians):
 lead steel pan 1
 lead steel pan 2 / snare drum
 double second steel pan 1
 double second steel pan 2
 cello steel pan / triangle
 bass steel pan / tam-tam

STRINGS

violin 1 (four players)
 violin 2 (four players)
 viola (four players)
 cello (four players)
 *6-string electric bass (one player)

*Alternative parts are available to substitute for unusual instruments:

5-octave marimba may be replaced by 4-octave marimba

6-string electric bass may be replaced by keyboard

RUDOLF HAKEN CONCERTO FOR CLARINET, ORCHESTRA, AND STEEL PANS

dedicated to Bill King

For several years this work remained a "concerto in search of a solo instrument." Originally the slow movement was written for the viola. The concerto was later performed as a trumpet concerto by Paul Merkelo, principal trumpet of the Montreal Symphony, then was recast as a concerto for soprano saxophone. I finally decided the clarinet was the ideal instrument for this concerto. It is in this form (with major changes to the orchestration) that the work is being performed this evening.

Interestingly, this is not the first concerto to be recast for different solo instruments: Bach rewrote violin concertos for the harpsichord, Mozart transcribed his oboe concerto for the flute, and Beethoven published a piano version of his violin concerto. Another interesting aspect of composition is finding the ideal location to compose. There are times when a noisy, disruptive environment is particularly inspiring. Mozart wrote his famous trio for clarinet, viola, and piano in a bowling alley. Similarly, I wrote much of this concerto during a lengthy Greyhound bus journey, actually choosing to travel by bus in order to give me time and repose for writing.

I have had a long-standing interest in incorporating steel pans into orchestral music. This union of vastly different timbres and musical styles has provided wonderful compositional opportunities.

The first movement of this concerto is a tribute to Johann Sebastian Bach. Although the music sounds nothing like Bach, it is based on four notes which spell his name. (In German notation, B-A-C-H is equivalent to B flat -A-C-B). This motif is first stated by the clarinet alone, followed by the lead steel pan. The electric bass then creates a twelve-tone ostinato by presenting "BACH" in three different tonalities. This serves as the basis for a calypso rhapsody played by the steel band. The clarinet and orchestra join in numerous variations on "BACH," which take on the character of group jazz improvisation, replete with quotations from major works. After a clarinet cadenza, the opening calypso theme returns, played by the full orchestra. A solo tuba ritornello leads into the lyrical second movement.

The slow movement is based on an "ACH" motif, that is to say, "B-A-C-H" minus the first note. Vibraphone and marimba accompany the solo clarinet in an expressive, melancholy tune, which is answered in solos by several members of the orchestra.

The finale then opens with a "CH" motif, which is of course the second half of the "BACH" motif. From this develops a raucous tune in triple meter, which alternates throughout the movement with an expansive, lyrical melody. The concerto culminates in a bombastic climax, featuring an epic battle between these two themes.

Rudolf Haken Concerto for Clarinet, Orchestra, and Steel Pans

I. Allegro Moderato (♩=112)

cues

solo clarinet

steelpan

electric bass

All cues are in concert pitch.

pan

10

steelpan

PAN

mf

pan

14

f

pan

18

pan

22

pan

mf *f*

26

30

pan

33

pan

ff

36

38

pan

ff

41

pan

44

pan

47

pan

50

pan

53

pan

f

solo clarinet

57

pan

gong

62

pan

solo clarinet

66

pan

72

pan

orch.

77

pan

81

snare

change to snare

solo clar. orch. clar. orch. clar. orch. clar.

84

snare

orch. solo clarinet clar.

SNARE *tr*

f

87

sax, marimba

clar.

snare

91

snare

95

(SNARE) *p*

strings

snare

99

gong solo clarinet

oboe, sax

tpt, hn

pan

change to pan

104

pan

108

electric bass

orch. clar. & violas

pan

112

sax & violins

solo clarinet

pan

118

pan

PAN
f

piccolo

122

pan

solo clarinet

piccolo

125

pan

solo clarinet

change to snare

130

snare

orch.

SNARE

ff

135

snare

>

139

snare

fff

clarinet cadenza

144
pan
change to pan

150
pan

158
pan

163
pan

168
pan

175
pan
electric bass
Tempo Primo (♩=112)
solo clar.

180
pan
PAN
pp

185
pan
pp < p

189

mba
solo clarinet

pan

p

194

pan

p \curvearrowright *f*

198

pan

201

pan

ff

203

tr

tr

tr

tr

tr

snare

change to snare

208

orch.

snare

211

SNARE

ff

snare

215

(snare)

fff

> >

snare

219

change to pan

pan

221

allargando

pan

224

tuba cadenza

pan

229

pan

238

pan

240

pan

242

pan

244

pan

249
vib/mrba solo clarinet
II. Andante (♩=52)

pan

253

pan

256

pan

264 steelpans

PAN *molto cantabile*

rit. **f** *a tempo*

pan

268

poco rit.

pan

272
solo clarinet
Moderato (♩=72)

pan

276 trumpet

pan

279
rit. solo clarinet

pan

282 oboe
poco rit.

pan

285 vib/mba solo clar.
Andante (♩=52)

pan

289

pan

292

woodwinds

poco rit.

solo clarinet

Allegretto (♩=126)

pan

298

poco rit.

a tempo

pan

306

piccolo

sax

pan

315

poco rit.

vib/mba solo clarinet

Andantino (♩=58)

pan

321

poco rit.

pan

326 piccolo
Moderato (♩=72)

pan

330 solo clarinet

Andante (♩=52)

pan

334 sax piccolo bass clarinet

Moderato (♩=60)

pan

338 trumpet solo clarinet

pan

342 el. bass

allarg. **f**

pan

348 *f. b \flat .* *ff. b \flat .*

solo clarinet

III. Solo - lento

Presto (♩=156)

pan

353

orch.

pan

361

solo clarinet

pan

369

orch.

pan

f

376

solo clarinet

pan

f

381

woodwinds

change to snare

pic. & vln. 1

pan

388

woodwinds

pic. & vln. 1

snare

394

tr. tr.

solo clarinet

snare

399

tr. tr.

snare

404

bass clar., tuba

SNARE

snare

ff

3

411

solo clarinet

snare drum

(SNARE)

snare

rall.

f

rall. e dim.

3

3

418

solo clarinet

Andante (♩=52)

snare

mp

3

3

2

3

3

3

4

3

5

3

423

snare

3

6

3

3

7

3

3

8

3

3

9

3

3

10

3

3

428

snare

3

11

3

3

12

3

3

13

3

3

14

3

3

15

3

3

433

horn

viola

change to pan

pan

442

morendo

ctbsn

allarg.

pan

450
solo clarinet
Presto (♩=156)
orch.
pan

457
pan

463
solo clarinet
strings
pan

471
WW
strings
WW
strings
pan

480
solo clarinet
piccolo
pan

488
pan

493
piccolo
solo clarinet
allarg.
oboe
Andante (♩=56)
pan

500
trumpet
solo clarinet
pan

510

Pan

Presto (♩=156)

516

Pan

GP orch.

522

Pan

PAN

527

Pan

solo clarinet

orch.

533

Pan

solo clarinet

f

541

Pan

brass

solo clarinet

orch. clarinet

solo clarinet

violas & cellos

550

Pan

trmbn, bass clar.

oboe

solo clarinet

strings

561

Pan

solo clarinet

rit.

violins, violas

Half tempo (♩=78)

567

woodwinds

pan

576

brass solo clarinet

poco a poco stringendo
(increase tempo gradually to Presto)

tr tr

pan

583

tr tr

pan

589

violins

solo clarinet

Presto (♩=156)

ff

pan

597

orch.

pan

603

clar. # orch.

Largo molto sostenuto (♩=48)

ff grandioso

pan

609

pan

613

pan

618

pan

molto allargando

molto allargando

Presto giocoso (♩=156)

623

pan

629

orch.

solo clarinet

pan

635

orch.

pan

642

solo clarinet

ff

fff

fff

651

G.P. solo clarinet

ff

pan